

# VIRGINIA HOMES

MANUFACTURING CORPORATION

## COLLECTION OF HOMES



VIRGINIA HOMES MFG.

P.O. BOX 410

BOYDTON, VA 23917

(434) 738-6107

[WWW.VIRGINIAHOMESMFG.COM](http://WWW.VIRGINIAHOMESMFG.COM)

# STANDARD FEATURES OF VIRGINIA HOMES

## Insulation – Requirements may Vary by Location

- R-15 Exterior Walls
- R-19 Floors
- R-38 Ceiling
- Air Infiltration Wrap

## Roof

- 30 Year Architectural Style Roofing Shingles
- 30# Felt Underlayment and Ridge Vent
- 7/12 Roof Pitch on Ranches
- 12/12 Roof Pitch on Capes and Saltboxes
- 7/12 or 12/12 Roof Pitch on Two Stories (depending on model)
- Roof Rafters 16" o.c. with 7/16" OSB Sheathing
- 16" Overhang on Front and Rear for 5/12 and 7/12 Pitch Roofs
- 14" Overhang on Front and Rear 9/12 Pitch Roofs
- 8" Overhang on Front and Rear 12/12 Pitch Roofs
- 12" Overhang on Gable Ends (all models)
- Pull down attic stairs on 7/12 and 9/12 Pitch Roofs

## Exterior Walls

- Premium Vinyl Siding - .044" thickness, Double Traditional Lap or Double Dutchlap
- 15 inch Raised Panel Shutters – Front and Sides
- 7/16" Structural OSB Sheathing
- 2x4 Wall Studs, 16" o.c.
- Double 2x4 Top and Single 2x4 Bottom Plate
- Vented Soffit, 6" Metal Fascia

## Interior Walls and Ceiling

- 2x4 Interior Walls, 16" o.c.
- 2x4 Marriage Walls, 16" o.c.
- 8 Foot Ceiling Height
- ½" Drywall – Smooth Finish Walls with 2 Coats of Paint

## Exterior Doors and Windows

- 36" Insulated 6 Panel Fiberglass Front Door with Metal Threshold
- 32" Insulated 9 Lite Rear Door "No Rot" Bottom of Door Jams
- Double Hung, Tilt Sash, Low "E" Insulated Glass White Vinyl Windows
- Dead Bolt Lock– Front and Rear Doors

## Interior Doors and Trim

- Pre-Painted White 6 Panel Interior Doors
- Pre-Painted White Window Casing
- Pre-Painted Floor and Ceiling Moldings
- Satin Nickel Hardware
- White Epoxy Coated Wire Closet Shelves and Rods
- Privacy Locks on Bathrooms and Bedrooms
- Door Stops
- Three Butt Hinges on All Interior Doors

## Floors

- 2x10 Floor Joists, 16" o.c.
- Finished Space - 23/32" Tongue and Groove OSB Single Layer Floor-Glued and Fastened
- Second Floor of Cape Cod and Salt Box Unfinished Space – 19/32" OSB

## Electrical

- 200 AMP Service with Circuit Breakers
- Exterior Door Lights
- Door Chime at Front Door
- 2 Telephone Jacks
- 2 Cable TV Jacks
- Wired for Ceiling Light in Dining Room with Dimmer Switch
- Wired and Braced for Ceiling Fan and Light in Living Room and Bedrooms
- Light Fixtures for Halls, Utility Room and Walk-in Closets
- Automatic Smoke Detectors Interconnected with Battery Backup
- 110 Volt Washer Receptacle
- Electrical Wired per National Electric Code
- Ground Fault Circuit Interrupters for External Receptacles and Bath and Kitchens
- 2 Weatherproof Outside Receptacles
- Dimmer Switch for Dining Room Light
- Boots and Registers for HVAC
- 8 Wire Thermostat

# STANDARD FEATURES OF VIRGINIA HOMES

## Floor Covering

- 16" Vinyl Floor Tile
- 24 oz. Shaw Carpet with 7/16" (6 lb. density) pad

## Plumbing

- 40 Gallon Electric Water Heater - Double Element
- Water Shut-Off for All Fixtures
- Washer Plumbing
- Whole House Water Shut-Off
- PVC Drain Lines
- 2 Outside Freezeless Water Faucets
- Plumb For Dishwasher
- Plumb for Icemaker

## Baths

- Custom Built Oak Vanities with Nickel Hardware
- Drawers in Vanities 36" and Larger
- 60" One-Piece Fiberglass Tub
- One-Piece Fiberglass Shower or Garden Tub (specified on select models)
- Single Lever Delta Anti-Scald Faucets and Pressure Balanced Faucet on Shower
- Lighted Exhaust Fans
- Glass Mirror
- Wired for Light Fixture above Mirrors
- Water Saver Commode

## Kitchens

- Recessed Can Lights (5) including Separately Switched Recessed Can over Kitchen Sink
- Custom Built Oak Cabinets with Nickel Hardware
- Concealed Cabinet Hinges
- 7.5" Deep Stainless Double Bowl Sink
- Drawer over Door Base Construction
- Single Lever Faucet with Sprayer Attachment
- Stainless Steel Double Bowl Sink
- Range Hood with Light (Unless Specified for Microwave)

## Additions for Cape Cods

- 110 Volt Electrical Circuit to Junction Box for Future Lighting Circuit on Second Level
- Rough-in Plumbing for Future Second Floor Bath
- Carpet on Stairs to Second Floor, Oak Railings
- Engineered Rafters 16" o.c., Trusses serve as floor for second level

## Additions for Traditional Two Stories and Saltboxes

- First Floor Ceiling Joist 2x6, 16" o.c.
- Second Floor - Floor Framing 2x10, 16" o.c. (Living Space on Saltboxes)
- Carpet on Stairs to Second Floor, Oak Railings

\* The features above are standard in every home, but a multitude of options are available. Please contact a Virginia Homes Manufacturing representative for details.

\* Because of continuous product development, Virginia Homes Mfg. may change specifications and materials without notice. Square footage and dimensions are approximate. Floor plans and renderings may be shown with optional on-site built features.

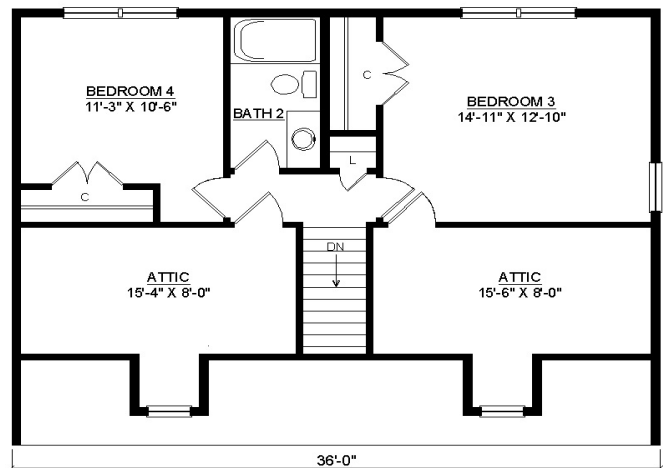
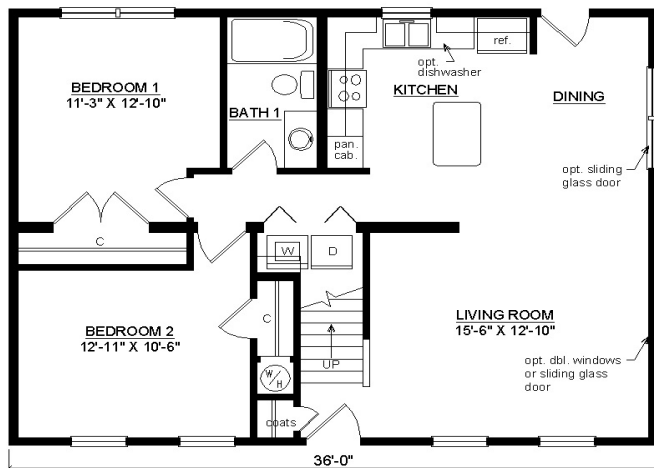


# SMALLWOOD SALTBOX



SHOWN WITH OPTIONAL ON SITE BUILT PORCH,  
CRAFTSMAN DOOR AND DORMERS

1476 Sq. Ft. (FINISHED) 299 Sq.Ft. (UNFINISHED) BEDROOMS: 4 BATHS: 2



SHOWN WITH OPTIONAL 6" EXTERIOR WALLS

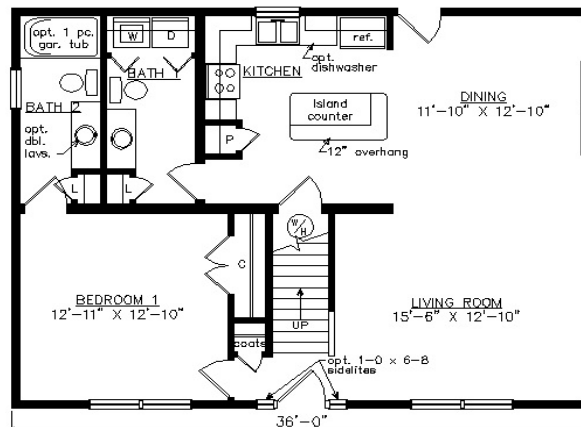
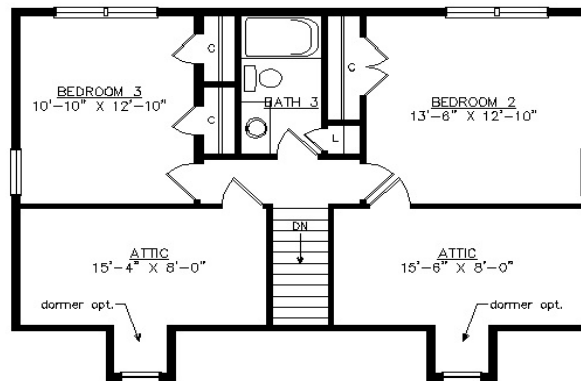
[WWW.VIRGINIAHOMESMFG.COM](http://WWW.VIRGINIAHOMESMFG.COM)

# SHENANDOAH SALT BOX



SHOWN WITH OPTIONAL ON SITE BUILT PORCH,  
FANLITE DOOR AND DORMERS

1476 Sq. Ft. (FINISHED) 288 Sq.Ft. (UNFINISHED) BEDROOMS: 3 BATHS: 3

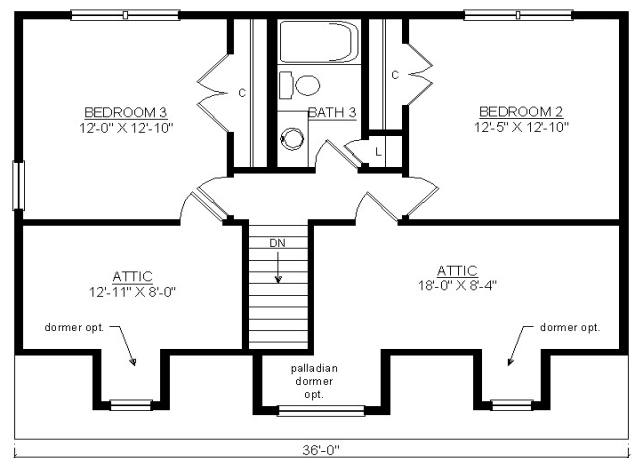
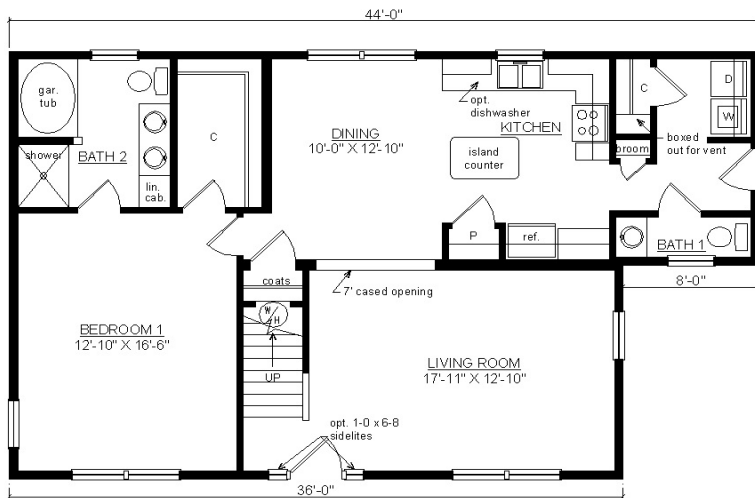


SHOWN WITH OPTIONAL 6" EXTERIOR WALLS

# OXFORD SALT BOX



SHOWN WITH OPTIONAL ON SITE BUILT PORCH,  
 FANLITE DOOR, DOOR SIDELITES AND DORMERS  
 1585 Sq. Ft. (FINISHED) 298 Sq.Ft. (UNFINISHED) BEDROOMS: 3 BATHS: 2.5



SHOWN WITH OPTIONAL 6\"/>

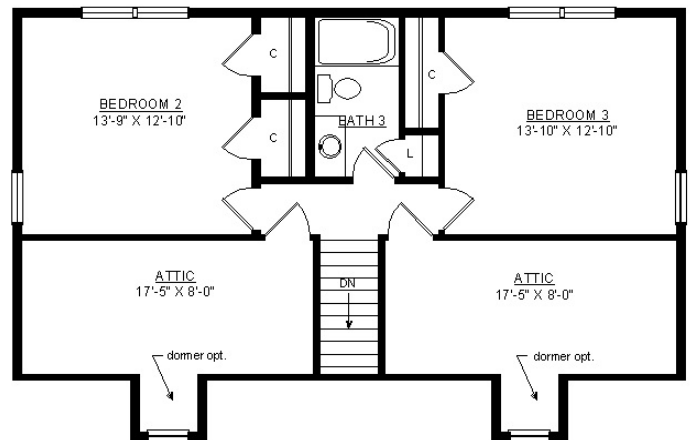
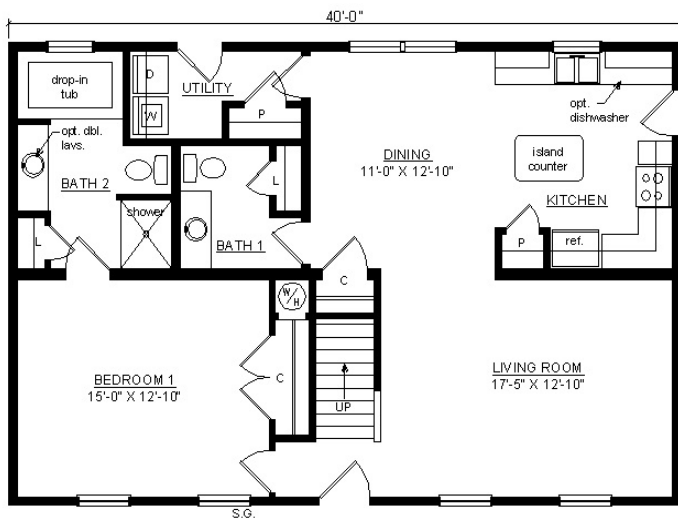


# WEDGEPORT SALTBOX



SHOWN WITH OPTIONAL ON SITE BUILT PORCH,  
FANLITE DOOR AND DORMERS

1640 Sq. Ft. (FINISHED) 320 Sq.Ft. (UNFINISHED) BEDROOMS: 3 BATHS: 2.5



SHOWN WITH OPTIONAL 6" EXTERIOR WALLS

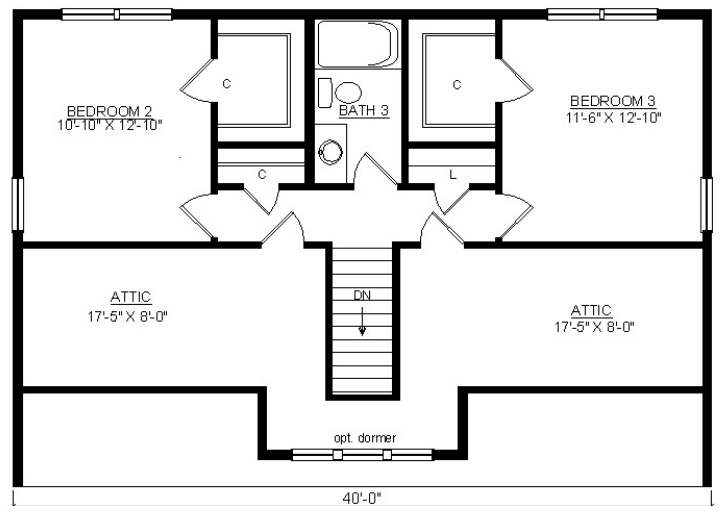
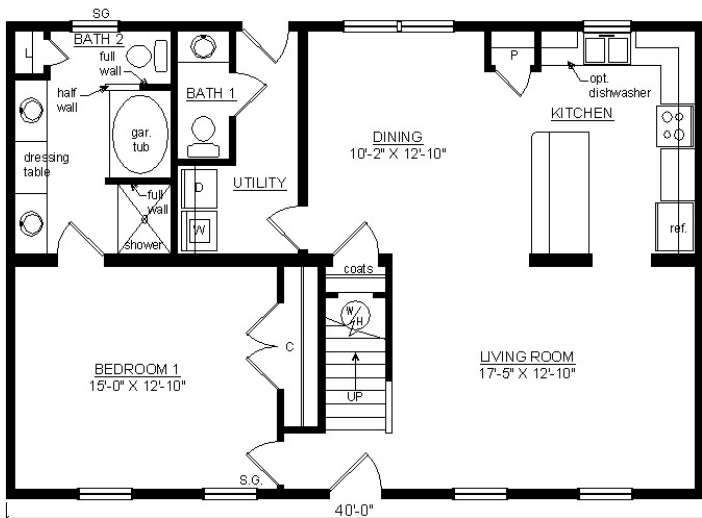
[WWW.VIRGINIAHOMESMFG.COM](http://WWW.VIRGINIAHOMESMFG.COM)

# MIDLOTHIAN SALT BOX



SHOWN WITH OPTIONAL ON SITE BUILT PORCH, CRAFTSMAN WINDOWS,  
CRAFTSMAN DOOR AND DORMER

1640 Sq. Ft. (FINISHED) 332 Sq.Ft. (UNFINISHED) BEDROOMS: 3 BATHS: 2.5



SHOWN WITH OPTIONAL 6" EXTERIOR WALLS

[WWW.VIRGINIAHOMESMFG.COM](http://WWW.VIRGINIAHOMESMFG.COM)

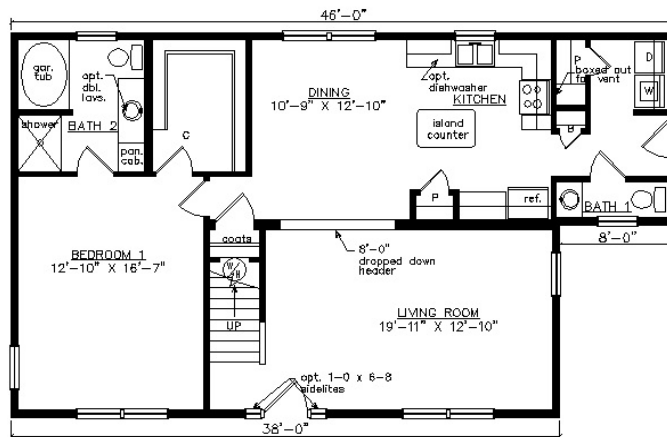
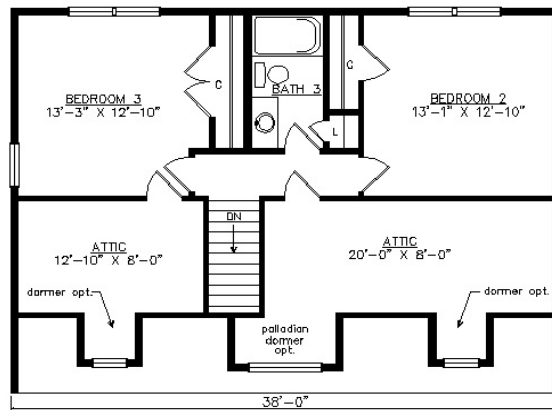


# NORTHAMPTON SALT BOX



SHOWN WITH OPTIONAL ON SITE BUILT PORCH,  
FANLITE DOOR, DOOR SIDELITES AND DORMERS

1666 Sq. Ft. (FINISHED) 315 Sq.Ft. (UNFINISHED) BEDROOMS: 3 BATHS: 2.5



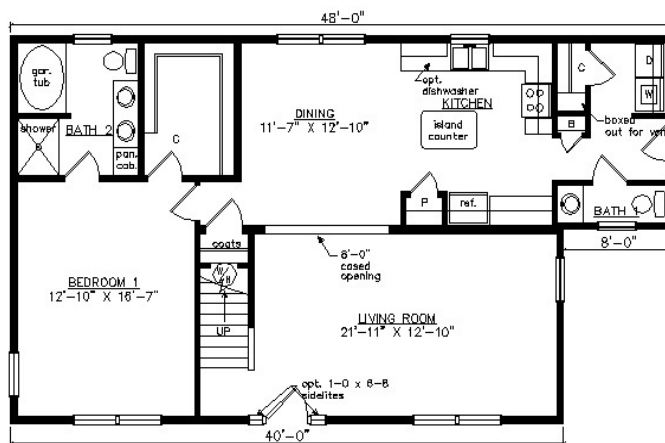
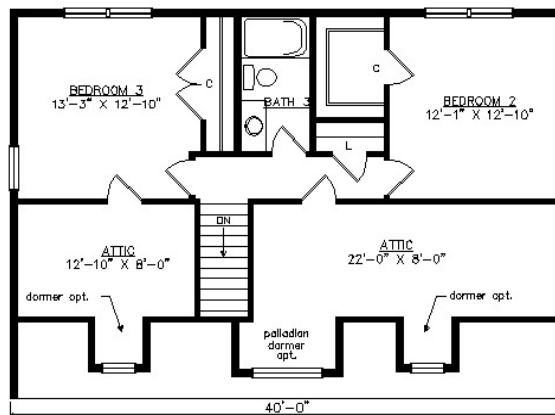
SHOWN WITH OPTIONAL  
6" EXTERIOR WALLS

# SOUTHAMPTON SALT BOX



SHOWN WITH OPTIONAL ON SITE BUILT PORCH,  
FANLITE DOOR, DOOR SIDELITES AND DORMERS

1749 Sq. Ft. (FINISHED) 332 Sq.Ft. (UNFINISHED) BEDROOMS: 3 BATHS: 2.5

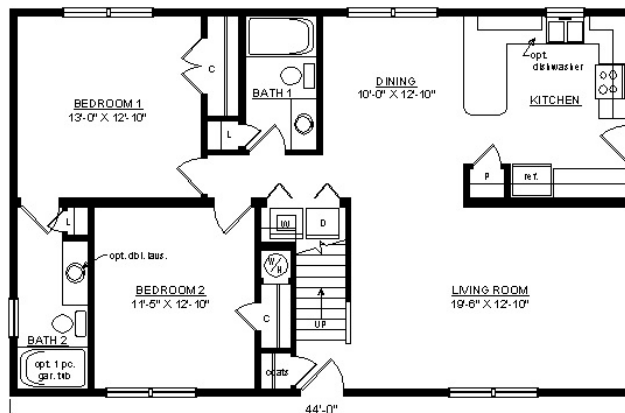
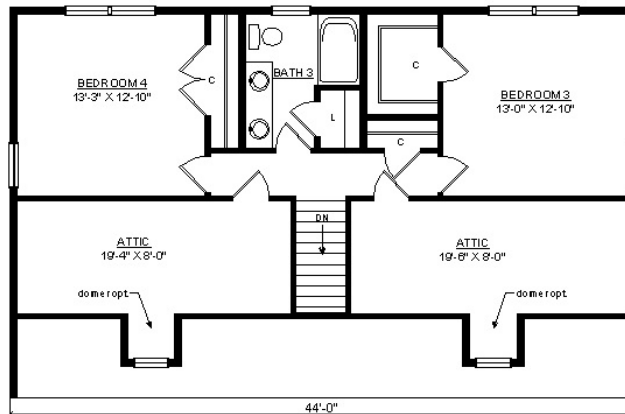


# BAYPORT SALTBOX



SHOWN WITH OPTIONAL ON SITE GABLE PORCH,  
FANLITE DOOR AND DORMERS

1804 Sq. Ft. (FINISHED) 365 Sq.Ft. (UNFINISHED) BEDROOMS: 4 BATHS: 3



SHOWN WITH OPTIONAL  
6" EXTERIOR WALLS

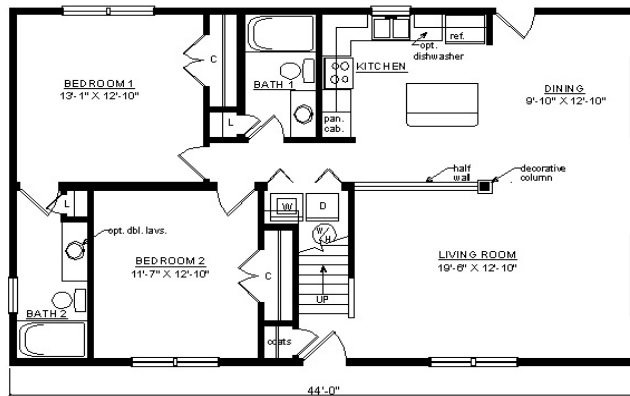
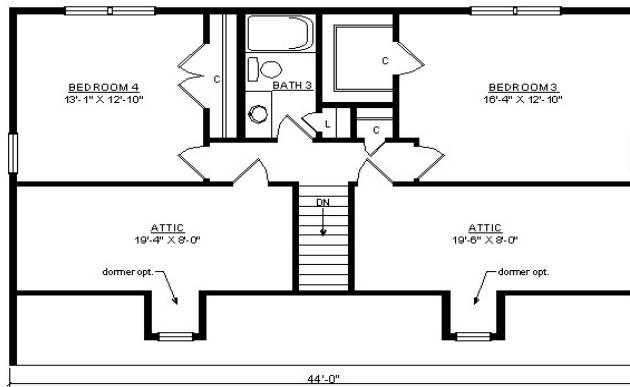


# KINGSPORT SALTBOX



SHOWN WITH OPTIONAL ON SITE BUILT PORCH,  
FANLITE DOOR AND DORMERS

1804 Sq. Ft. (FINISHED) 367 Sq.Ft. (UNFINISHED) BEDROOMS: 4 BATHS: 3



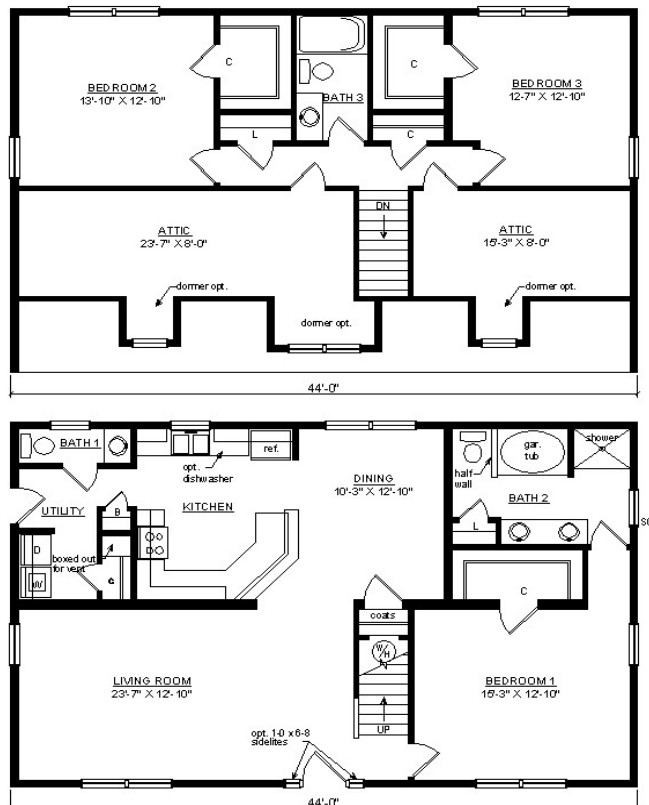
SHOWN WITH OPTIONAL  
6\"/>

# CHATHAM SALT BOX



SHOWN WITH OPTIONAL ON SITE BUILT PORCH,  
FANLITE DOOR AND DORMERS

1804 Sq. Ft. (FINISHED) 365 Sq.Ft. (UNFINISHED) BEDROOMS: 3 BATHS: 2.5

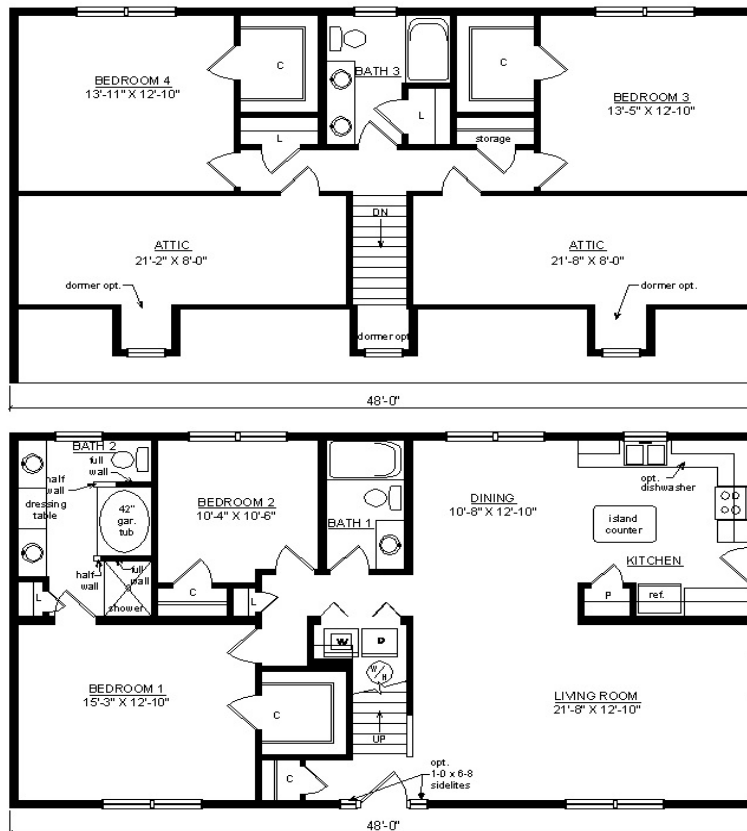


SHOWN WITH OPTIONAL  
6" EXTERIOR WALLS

# ROCKPORT SALT BOX



SHOWN WITH OPTIONAL ON SITE BUILT PORCH,  
 FANLITE DOOR, DOOR SIDELITES AND DORMERS  
 1968 Sq. Ft. (FINISHED) 398 Sq.Ft. (UNFINISHED) BEDROOMS: 4 BATHS: 3



SHOWN WITH OPTIONAL  
 6" EXTERIOR WALLS

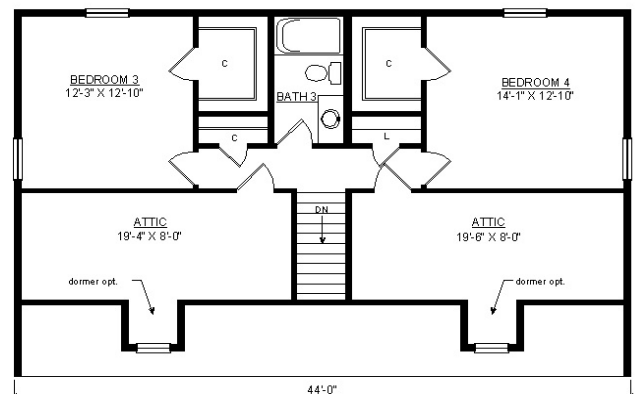
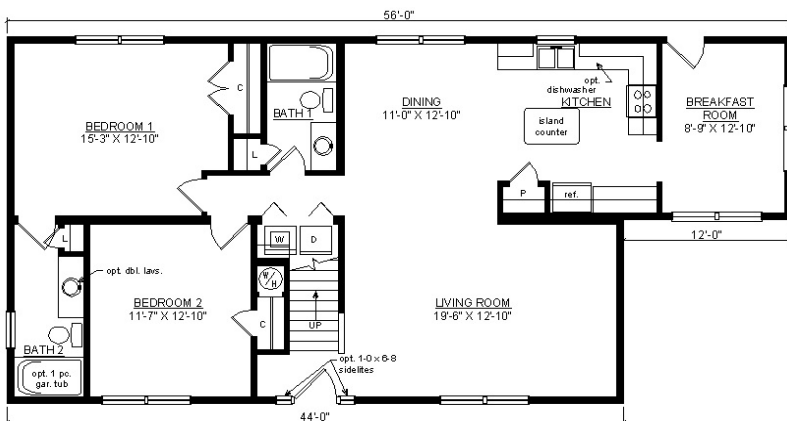


# NEWPORT SALTBOX



SHOWN WITH OPTIONAL ON SITE GABLE PORCH,  
FANLITE DOOR, ACCENT SHAKES AND DORMERS

1968 Sq. Ft. (FINISHED) 352 Sq.Ft. (UNFINISHED) BEDROOMS: 4 BATHS: 3



SHOWN WITH OPTIONAL 6" EXTERIOR WALLS

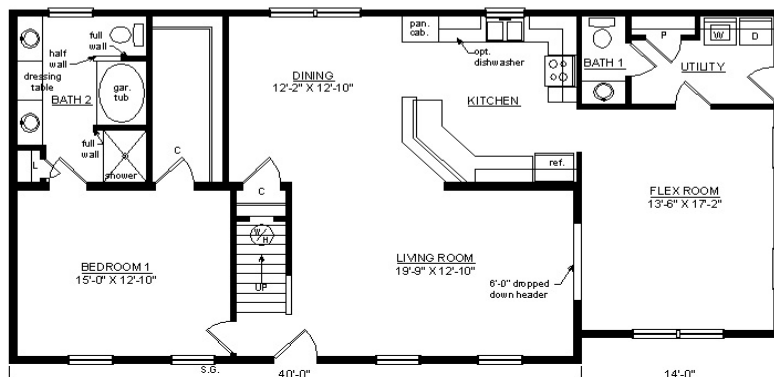
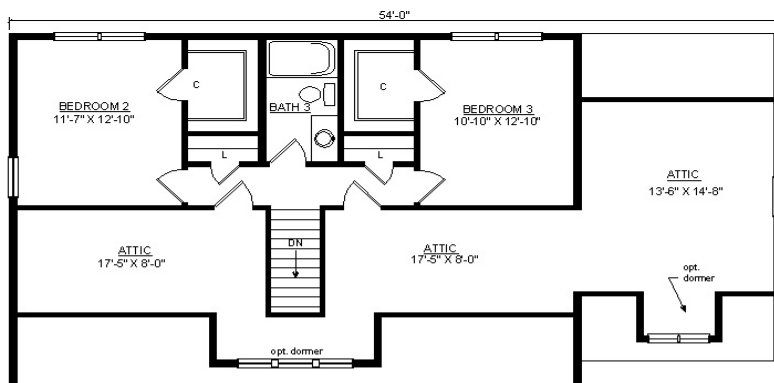
[WWW.VIRGINIAHOMESMFG.COM](http://WWW.VIRGINIAHOMESMFG.COM)

# POWHATAN SALTBOX



SHOWN WITH OPTIONAL ON SITE BUILT PORCH,  
CRAFTSMAN DOOR AND DORMERS

1995 Sq. Ft. (FINISHED) 546 Sq.Ft. (UNFINISHED) BEDROOMS: 3 BATHS: 2.5



SHOWN WITH OPTIONAL 6" EXTERIOR WALLS

[WWW.VIRGINIAHOMESMFG.COM](http://WWW.VIRGINIAHOMESMFG.COM)

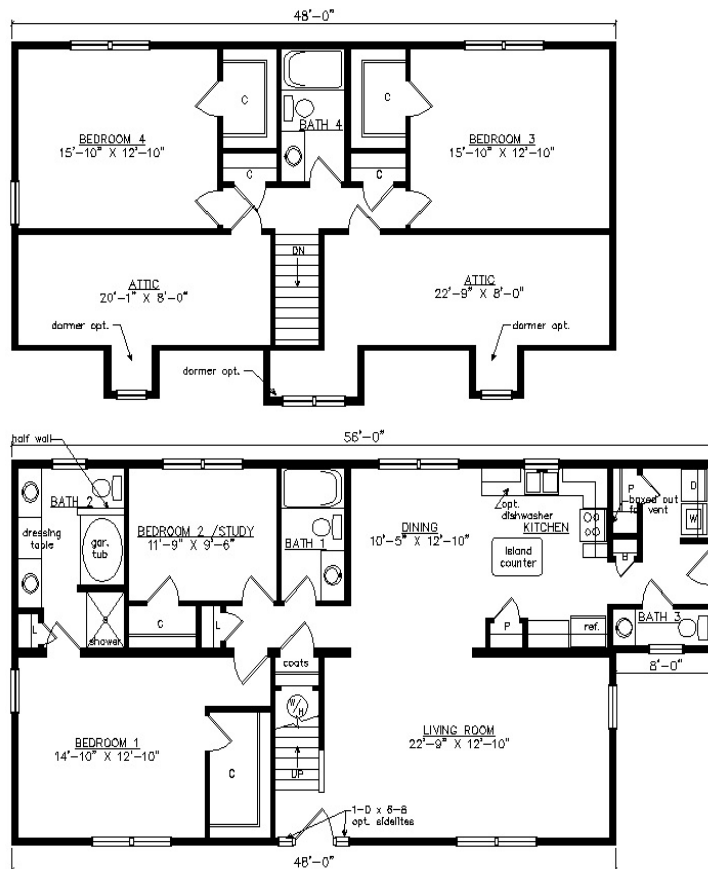


# CAROLINA SALT BOX



SHOWN WITH OPTIONAL ON SITE BUILT PORCH, FAN LITE DOOR,  
DOOR SIDELITES AND DORMERS

2077 Sq. Ft. (FINISHED) 398 Sq.Ft. (UNFINISHED) BEDROOMS: 4 BATHS: 3.5



SHOWN WITH OPTIONAL  
6" EXTERIOR WALLS

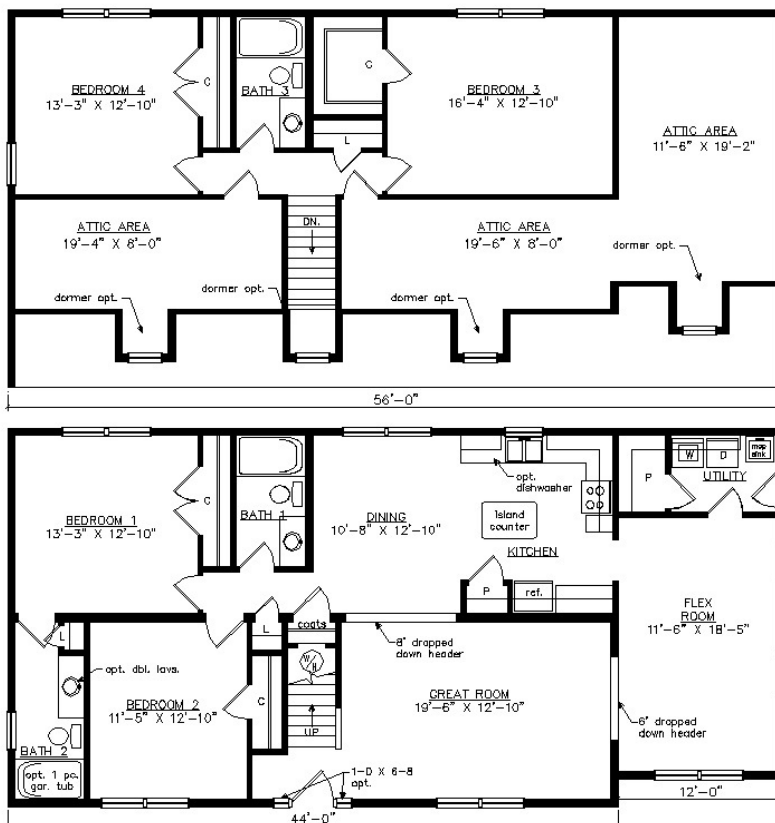


# NEW HARBOR SALT BOX



SHOWN WITH OPTIONAL ON SITE BUILT PORCH, FAN LITE DOOR,  
DOOR SIDELITES AND DORMERS

2109 Sq. Ft. (FINISHED) 606 Sq.Ft. (UNFINISHED) BEDROOMS: 4 BATHS: 3



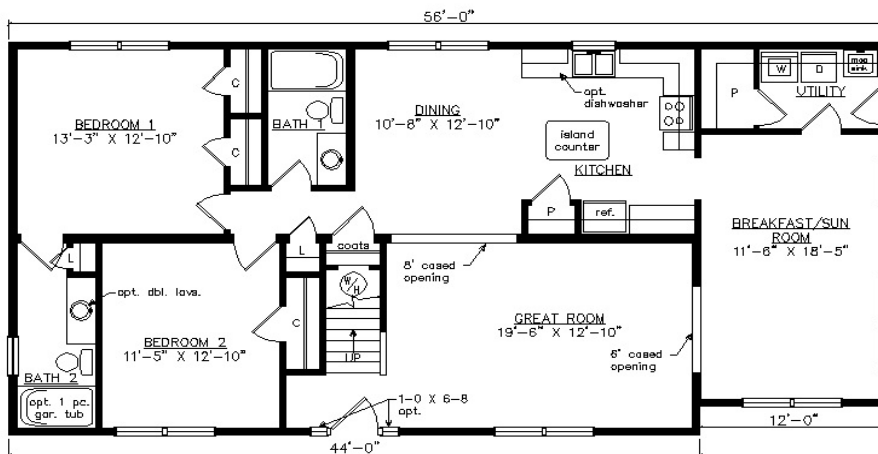
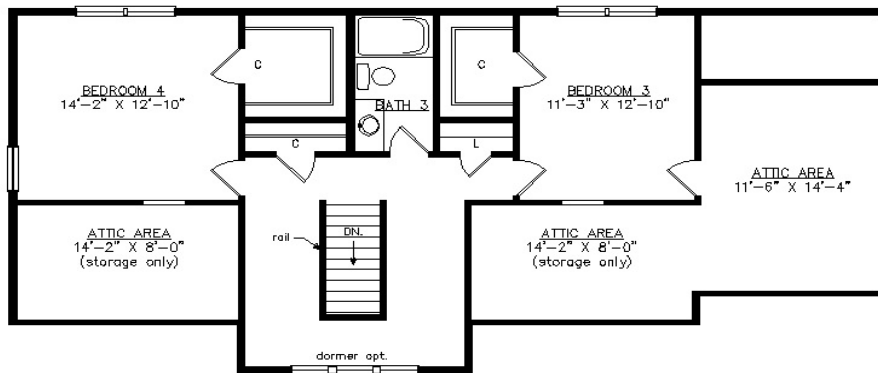
SHOWN WITH OPTIONAL  
6" EXTERIOR WALLS

# AMELIA SALT BOX



SHOWN WITH OPTIONAL ON SITE BUILT PORCH, CRAFTSMAN DOOR,  
DOOR SIDELITES AND SHED DORMER

2109 Sq. Ft. (FINISHED) 606 Sq.Ft. (UNFINISHED) BEDROOMS: 4 BATHS: 3



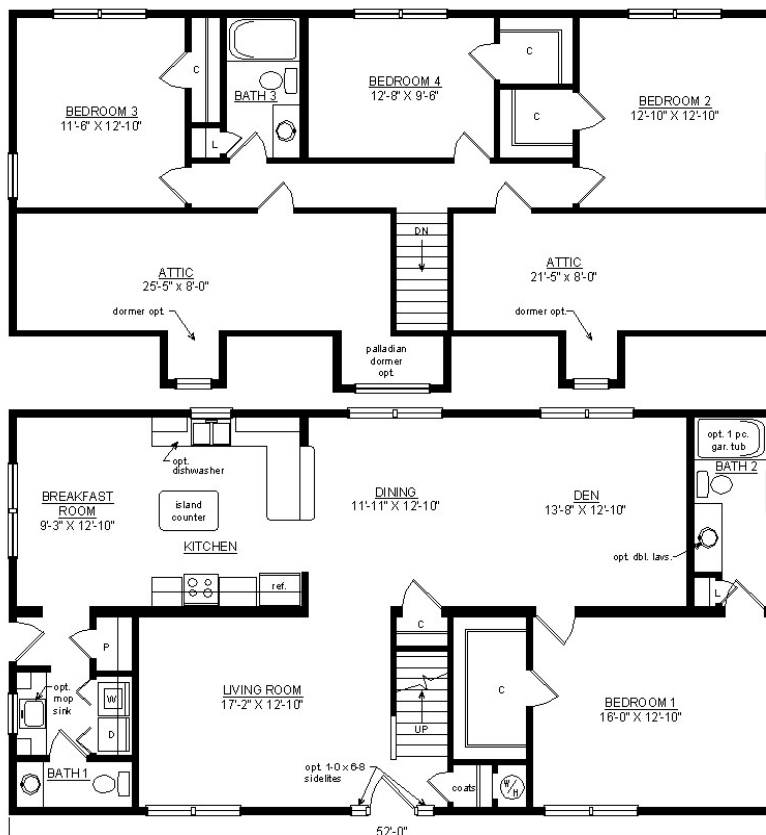
SHOWN WITH OPTIONAL  
6" EXTERIOR WALLS



# BRIDGEPORT SALTBOX



SHOWN WITH OPTIONAL ON SITE PORCH,  
 FANLITE DOOR, DOOR SIDELITES AND DORMERS  
 2132 Sq. Ft. (FINISHED) 416 Sq.Ft. (UNFINISHED) BEDROOMS: 4 BATHS: 2.5



SHOWN WITH OPTIONAL  
 6" EXTERIOR WALLS

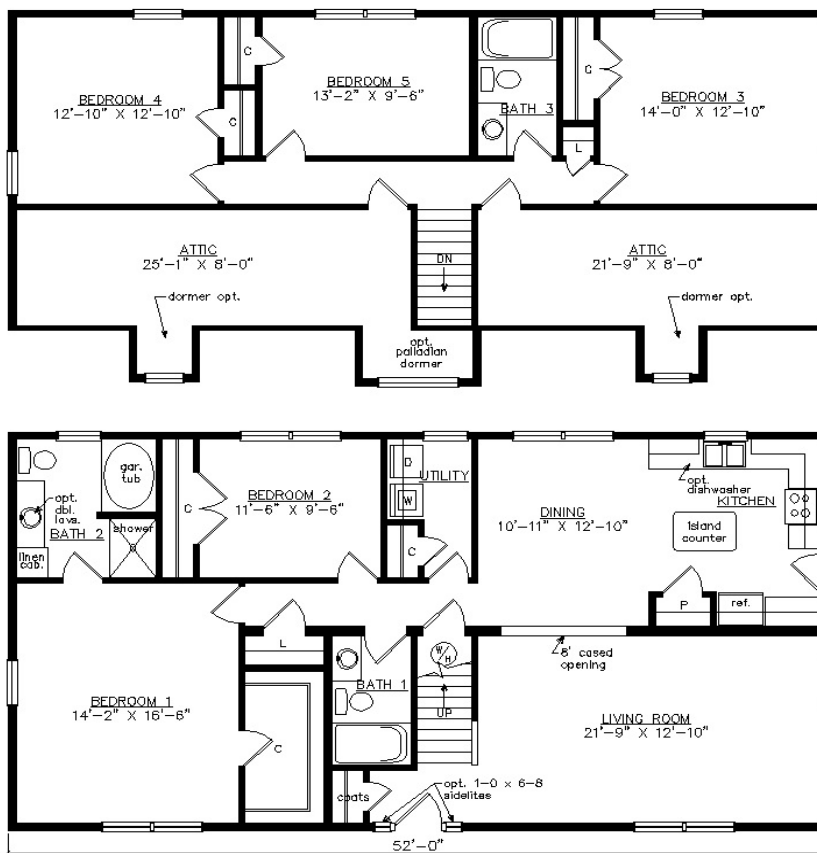


# SOUTHPORT SALT BOX



SHOWN WITH OPTIONAL ON SITE PORCH,  
FANLITE DOOR AND DORMERS

2132 Sq. Ft. (FINISHED) 416 Sq.Ft. (UNFINISHED) BEDROOMS: 4 BATHS: 3



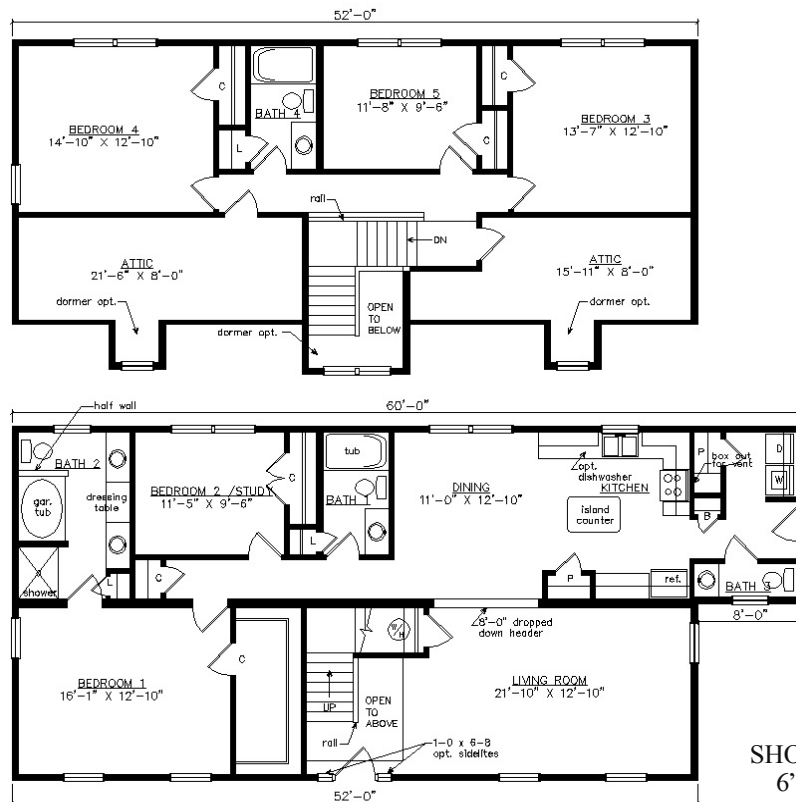
SHOWN WITH OPTIONAL  
6" EXTERIOR WALLS

# HALIFAX SALT BOX



SHOWN WITH OPTIONAL ON SITE BUILT PORCH, FAN LITE DOOR,  
DOOR SIDELITES AND DORMERS

2242 Sq. Ft. (FINISHED) 431 Sq.Ft. (UNFINISHED) BEDROOMS: 5 BATHS: 3.5



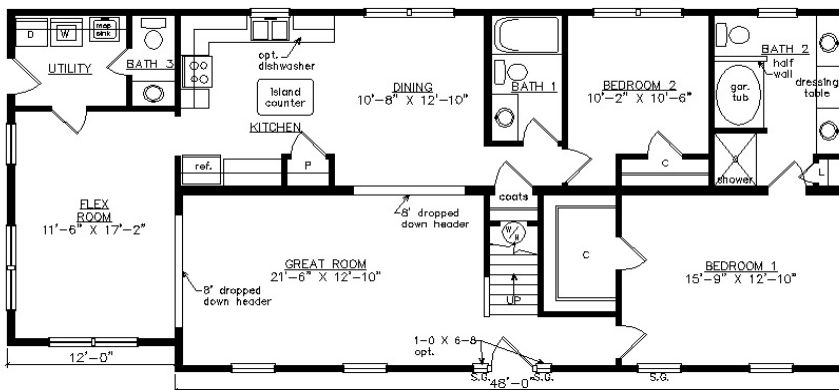
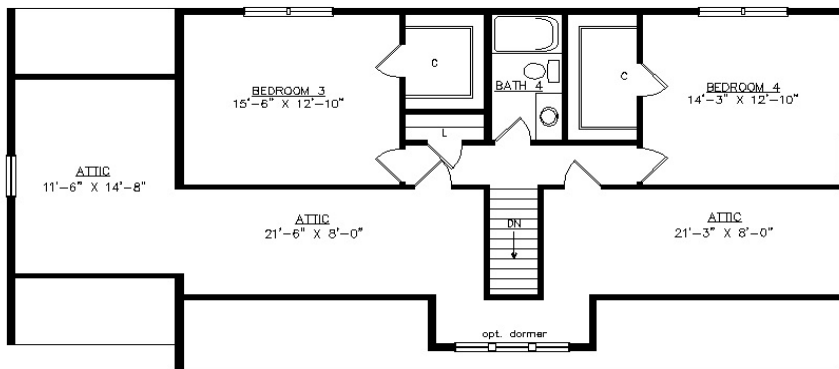
SHOWN WITH OPTIONAL  
6" EXTERIOR WALLS

# GOOCHLAND SALT BOX



SHOWN WITH OPTIONAL ON SITE BUILT PORCH, CRAFTSMAN DOOR  
DOOR SIDELITES AND DORMER

2272 Sq. Ft. (FINISHED) 582 Sq.Ft. (UNFINISHED) BEDROOMS: 4 BATHS: 3.5



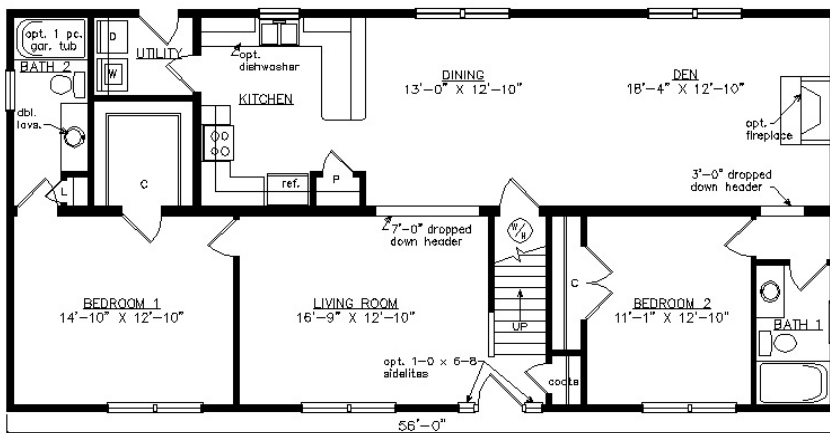
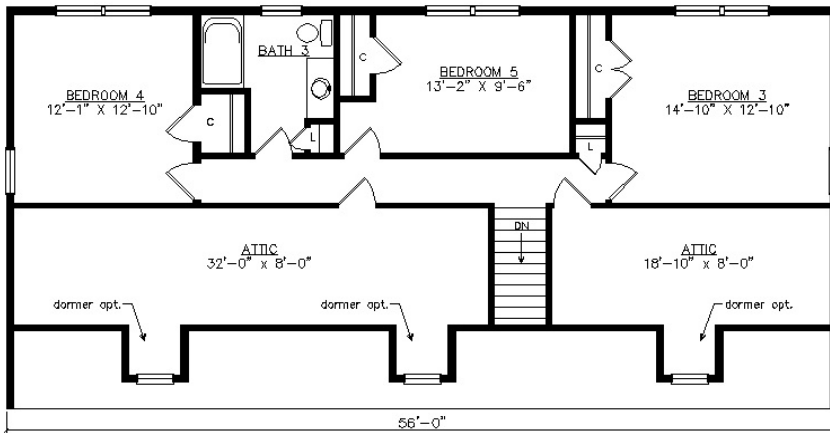
SHOWN WITH OPTIONAL  
6" EXTERIOR WALLS



# FREEPORT SALTBOX



SHOWN WITH OPTIONAL ON SITE BUILT PORCH AND DORMERS  
 2296 Sq. Ft. (FINISHED) 467 Sq.Ft. (UNFINISHED) BEDROOMS: 5 BATHS: 3



SHOWN WITH OPTIONAL  
 6" EXTERIOR WALLS